



SRINAKHARINWIROT UNIVERSITY

Sustainable Development Goals Report **2023**



TABLE OF CONTENT

ABOUT SRINAKHARINWIROT UNIVERSITY	3
HIGHLIGHTS	4
INTRODUCTION	5
OUTSTANDING PROJECT	9
SDG1 No Poverty	10
SDG2 Zero Hunger	12
SDG3 Good Health and well-being	14
SDG4 Quality Education	16
SDG5 Gender Equality	18
SDG6 Clean Water and Sanitation	20
SDG7 Affordable and Clean Energy	22
SDG8 Decent Work and Economic Growth	23
SDG9 Industry Innovation and Infrastructure	25
SDG10 Reduced Inequalities	27
SDG11 Sustainable Cities and Communities	29
SDG12 Responsible Consumption and Production	31
SDG13 Climate Action	32
SDG14 Life Below Water	33
SDG15 Life on Land	34
SDG16 Peace, Justice and Strong Institutions	35
SDG17 Partnerships for the Goals	37





ABOUT SRINAKHARINWIROT UNIVERSITY

Philosophy

Education is Growth

The five growth respects are

1. Growth of faith: trust in life, roles and one's own duty.
2. Growth of sacred precepts: ethics and goodness.
3. Growth of attentiveness: thoughtfulness and continuous learning.
4. Growth of abandonment: generosity and kindness to others
5. Growth of wisdom: living, thinking, and doing with intellect.

Vision

Learning university for society

Missions

1. Produce and develop people of all ages with the desirable traits for national development through excellent learning process
2. Create high quality research and innovation for sustainable social development
3. Deliver valuable academic services based on social responsibility
4. Study, preserve, and enrich cultures and arts
5. Develop an administration system based on excellence and good governance

Core Values

S Social Responsibility

W Work Smart

U Unity

Organizational Culture

1. Cultivate politeness and humility.
2. Instill a collective mindset and prioritize public interests.
3. Achieve academic excellence and uphold moral integrity.

Core Competencies

1. Expertise in learning provision of the modern disciplines at international quality standards
2. Participatory academic services for a resilient and sustainable society



HIGHLIGHTS

Institute



16 Faculties
5 Colleges



3 Institutes
8 Bureaus/Centers



3 Hospitals



5 Demonstration Schools



Students
29,327 Graduate Students



Faculty Staffs
1,500 Staffs

Programs



Total **197** | **93** Undergraduate programs
104 Postgraduate programs
12 International programs



International Accreditation

2 programs, WFME (World Federation for Medical Education)
12 programs, AUN-QA (ASEAN University Network-Quality Assurance)



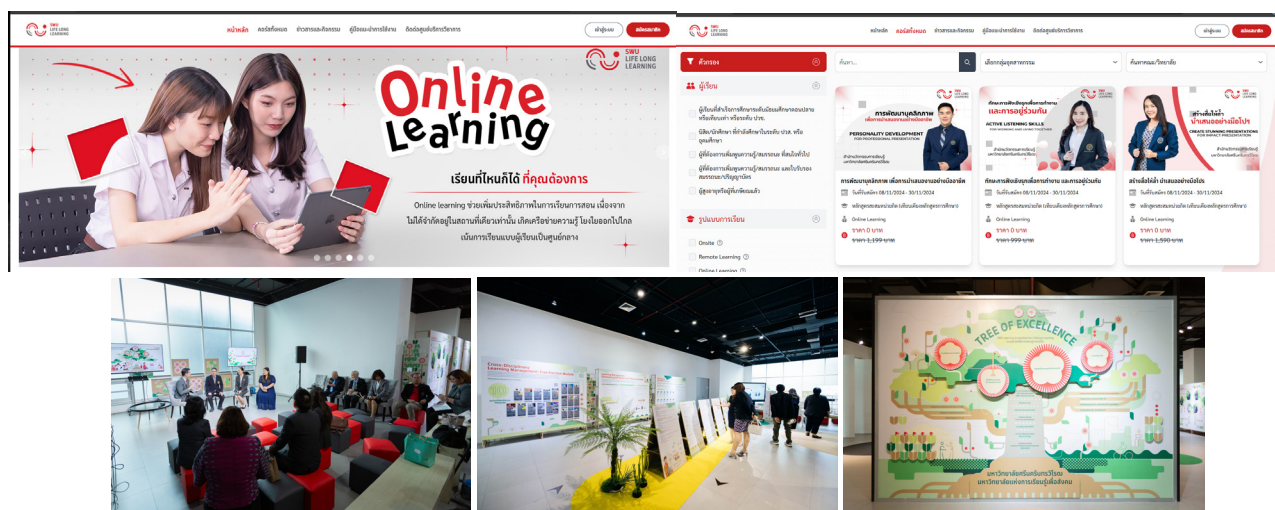


Teaching

Srinakharinwirot University (SWU) was founded and named the Advanced Teacher Training school in 1949. The College of Education was founded in place of the Advanced Teacher Training School in 1953. SWU became a comprehensive university and named Srinakharinwirot University in 1974. Currently, the university is an autonomous institute under the supervision of the Ministry of Higher Education, Science, Research and Innovation. Our vision is to be “Learning University for Society”.

Carried on the recognition of Thailand's first upper-education institution focusing solely on teacher training, together with the policy from the government to enhance graduates' performance with the 21st century skills recommended by the World Economic Forum, it is inevitable for Srinakharinwirot University (SWU) to play an active role to provide professional trainings for teachers in higher education, focusing on teaching and learning techniques and approaches. When applied appropriately, these can help teachers to bring out the best in their students as well as to help students to achieve learning outcomes identified in the program. With the reasons mentioned above, the university has been active in developing academic staff's quality with the project named “SWU-BEST” Srinakharinwirot University-Building Excellent Staffs in Teaching to meet the criteria of United Kingdom Professional Standards Framework (UKPSF) certified by Advance Higher Education of UK. Now, SWU has 476 UKPSF fellows with 1 Principal fellow, 84 Senior fellows and 390 fellows.

In 2024, SWU launched the SWU Life Long Learning platform to promote lifelong learning for people of all ages. This project aligns with SDG 4, which aims to ensure inclusive and equitable quality education and promote lifelong learning opportunities for all. The SWU Life Long Learning platform opens a learning space for a new era of education, reaching those eager to learn at any age and increasing the potential for easier access to new knowledge. Learners can accumulate learning units in the form of a credit bank. It provides an opportunity for students and learners to study and work simultaneously. Learners can enhance their skills by learning new ones through online courses, attending classes, and actual practice, preparing for new careers in the future.



Research

Srinakharinwirot University (SWU) sets the research direction based on the 13th National economic and social developmental plan (2023-2027), 20-year National research plan and University's vision: to be "Learning university for society". SWU research and innovation also follows the university's pledge for the achievement of UN-SDG. Therefore, SWU's research strategies are to produce high quality research and innovations which are beneficial in sustainable development of the country in terms of economy, society and environment. Four research themes; frontier and global research, high value-added economy, high opportunity society and eco-friendly living were announced; these themes covered 12 specific research clusters that were aligned with the 16 areas of UN-SDG, such as poverty reduction and adequate social protection (SDG1), circular economy and low carbon society (SDG 6,7,13), advance medicine (SDG 3,10) and innovative education (SDG1,2,4). The number of SWU's research publications that were aligned with the UN-SDG increased substantially from 193 publications in 2022 to 277 publications in 2023. These SDG research publications covered all 16 areas of UN-SDG, with the highest number in the SDG3, good health and well-being (108 publications), followed by SDG7, affordable and clean energy (28 publications) and SDG 4, Quality education (24 publications). Apart from publications, several research projects were implemented in the community and society for helping in sustainable development of the country. Examples of these research projects and their SDG impacts are listed.

"The Creation of Network and Mechanism to Help Enhance the Elderly Employability in Thai Society" by Associate Professor Cholvit Jearajit and team demonstrated the social, policy and economic impacts corresponded to SDGs 3,4,8,16. This research project promoted the employment skills of elderly, covering financial, health, and digital aspects, alongside occupational training, which helped them develop the necessary skills for self-reliance in a changing world. This project also initiated the formation of senior community enterprise networks within the province which encouraged collective action, facilitated knowledge exchange, and promotes joint activities. As a result, the quality of life and incomes of the elderly in Thai society were improved.

"The community organization council communicative community rights and water resource management in Suphan Buri province" by Associate Professor Poom Moolsilpa and team emphasized SDGs 2,6,12,16 by supporting the role of Community Organization Council to communicate community rights, prevent conflicts, establish strategic water flow management and promote sustainable water resources management in Suphan Buri Province. As a result, this project promoted sustainable agriculture through the participation in water resources management which secured farmers' incomes and reduce the risk of monoculture farming.

"Plant and herbal research studies" from Center for excellence in plant and herbal innovation research (CEPHIR) by Assistant Professor Pattarawit Rukthong and team supported SDGs 2,3,4,9,12,15. CEPHIR focused on antioxidant properties of Wolffia and encouraged farmers and small community enterprises to cultivate Wolffia in Smart Farm greenhouses. CEPHIR fosters interdisciplinary collaboration among science, food science, and engineering fields to develop mobile applications for food safety databases and Smart Farming under the BCG (Bio-Circular-Green) economic model. This helped create value-added agricultural products for community enterprises in Ban Chang subdistrict, U-Thai district, Phra Nakhon Si Ayutthaya province and expanded to the Department of Climate Change and Environment to establish learning centers which will benefit society and the environment in a larger scale.

Last example is the development of "An Application of Geographic Information System for Participatory Analysis of Wildfire Risk Area in Chiang Rai Province" by Assistant Professor Wuttichai Boonpook and team. Supporting SDG 11, this project created risk maps for forest fire occurrence which helped in planning and monitoring forest fires and planning community involvement in preventing burning in the area. This application has been adopted by the government for sustainable solutions in each area, such as setting burning periods and promoting the cultivation of alternative crops.

Outreach

Since 2005, Srinakharinwirot University has implemented academic service projects under its 15-year strategic plan (2010-2024) through the "One Province, One University" policy, guided by a sustainable development framework focused on three areas: economy, society/culture, and environment. Currently, the university has initiated no fewer than 900 projects with a budget allocation of at least 1.4 billion baht. The aim is to drive community and societal development to improve quality of life by leveraging the university's expertise to address issues and advance communities and society. It also seeks to build networks in the community across the public sector, private sector, academia, civil society, and community organizations.



Since 2021, Srinakharinwirot University has developed a 20-year strategic plan (2022-2037) as a framework for driving the university towards becoming a "Learning University for Society." In this plan, Strategy 3, "Social Engagement," serves as a core strategy that tangibly connects the university with society.

In 2021 and 2022, the university was allocated spaces to implement projects in alignment with the government's policy and the Ministry of Higher Education, Science, Research, and Innovation, namely the U2T and U2T for BCG initiatives. Since 2022, Srinakharinwirot University has been classified as a Group 3 "Reinventing University" institution, focusing on community-based development. This group emphasizes creating and developing skilled personnel to meet local needs and advancing local areas through knowledge and innovation.

ASOK MODEL

ASOK Model project aimed to advance the well-being of urban communities – The university is capable of contributing to sustainable development under the strategic plan to collaborate with society. Emphasis on the creation of a prototype to improve the urban communities' well-being in the Asok area, using an area-based approach.

ONGKHARAK MODEL

The ONGKHARAK Model aims to enhance the community of Ongkharak District in Nakhon Nayok Province– by setting up and building upon the knowledge in improving the integrated well-being of the community. It improves upon the integrated well-being network by definitive collaboration with local organizations, utilizing the community's cultural resources as a base.

Stewardship

SWU has many policies to act and respond the United Nations' Sustainable Development Goals (SDGs). Please see the list below.

- SDG 3: (3.3.6) Smoke-free policy
- SDG 4: (4.3.5) Lifelong learning access policy
- SDG 5: (5.6.1) Policy of non-discrimination against women
- SDG 5: (5.6.2) Non-discrimination policies for transgender
- SDG 5: (5.6.3) Maternity and paternity policies
- SDG 5: (5.6.8) Policies protecting those reporting discrimination
- SDG 7: (7.2.1) Energy-efficient renovation and building
- SDG 8: (8.2.3) Employment policy on discrimination
- SDG 8: (8.2.4) Employment policy modern slavery
- SDG 8: (8.2.5) Employment practice equivalent rights outsourcing
- SDG 8: (8.2.6) Employment policy pay scale equity
- SDG 10: (10.6.1) Non-discriminatory admissions policy
- SDG 10: (10.6.4) Anti-discrimination and Anti-harassment policies
- SDG 12: (12.2.1) Ethical sourcing policy
- SDG 12: (12.2.3) Policy waste disposal - hazardous materials
- SDG 12: (12.2.4) Policy waste disposal - landfill policy
- SDG 12: (12.2.5) Policy for minimisation of plastic use
- SDG 12: (12.2.6) Policy for minimisation of disposable items
- SDG 12: (12.2.7) Disposable policy: extensions to services
- SDG 12: (12.2.8) Minimisation policies extended to suppliers
- SDG 14: (14.4.3) Reducing marine pollution (policy)
- SDG 15: (15.4.2) Policy on plastic waste reduction
- SDG 15: (15.4.3) Policy on hazardous waste disposal

<https://sdg.swu.ac.th/policies>

Furthermore, SWU is conscious of the causes and effects of climate change and strives to find a path to mitigate the effects of greenhouse gas emissions, moving toward a low-emission society and carbon neutrality by 2040. We have established an MOU between Srinakharinwirot University and its faculties, colleges, institutes, offices, and agencies to achieve carbon neutrality within Srinakharinwirot University.

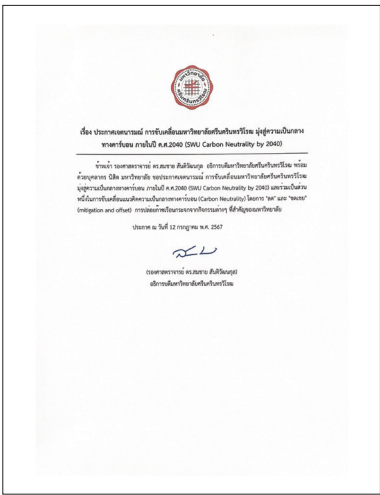




OUTSTANDING PROJECT

Memorandum of Understanding for Cooperation Between Srinakharinwirot University and Carbon Neutrality Agencies by 2040 (SWU Carbon Neutrality by 2040)

This MOU has been made between Srinakharinwirot University & faculties, colleges, Institutes, offices, and agencies within the university; SWU towards achieving Carbon Neutrality within Srinakharinwirot University. The university is conscious of the causes and effects of Climate Change & strives to find a path to mitigate the effects of greenhouse gas emissions, to move toward a low-emission society and Carbon Neutrality within 2040. Which aligned with the university's framework of physical development under the national goal of achieving Carbon Neutrality within 2050 and Net Zero GHG emission within 2065, as announced during the COP27 conference.





Research



4 Publications

Numerical

Scholarships Fund



Total **648** Student



13,948,247 THB

Scholarships	The Number of students	Scholarships Fund
Internal Fund	359 Students	4,316,891 THB
External Fund	289 Students	9,631,356 THB

Loan Fund



Total **11,226** Student



1,277,495,000 THB

► Low or lower-middle income countries student support

SWU organizes grants to support students from low or lower-middle-income countries. In the academic year 2023, SWU tasked the Student Affairs Office with organizing grants for supporting three Cambodian students.

<https://sdg.swu.ac.th/projects/90899/preview>



Outstanding Project

SWU has tasked the Social Service Office to provide assistance in the local community assisting the start-up of sustainable businesses through relevant education. In 2022, SWU has the U2T for BCG project to recover the economics after Covid-19 by creating the jobs and developing the career for 107 local communities in 6 provinces. In 2023, SWU has the reinventing university project to Promote and enhance the potential of vocational education students at Maharat Vocational College, Phra Nakhon Si Ayutthaya Province, by providing knowledge on social impact assessment and social return on investment (SROI)



2 ZERO HUNGER



Research



9 Publications

Numerical

Food waste



Total **53** Metric Tonne

Ref. <https://lookerstudio.google.com/u/0/reporting/cb33c087-a20d-4190-8719-608749c0b06d/page/nuG5D>

Number of graduates



Total **6,289** Graduates



2022 In Academic year

Number of graduates from agriculture and aquaculture courses including sustainability aspects



Total **364** Graduates



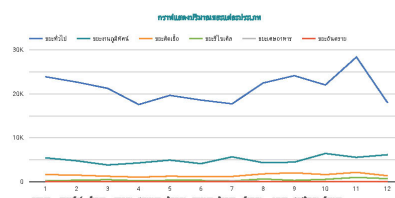
2022 In Academic year

► Campus food waste tracking

SWU has tasked the Sustainable Development Office with measuring the amount of food waste generated from food served within the university. In 2023, the total food waste was 1008.9 kg..

<https://lookerstudio.google.com/u/0/reporting/cb33c087-a20d-4190-8719-608749c0b06d/page/nuG5D>

ข้อมูลปริมาณขยะ ประจำปี พ.ศ. 2566 มหาวิทยาลัยศรีนครินทรวิโรฒ ประสานมิตร



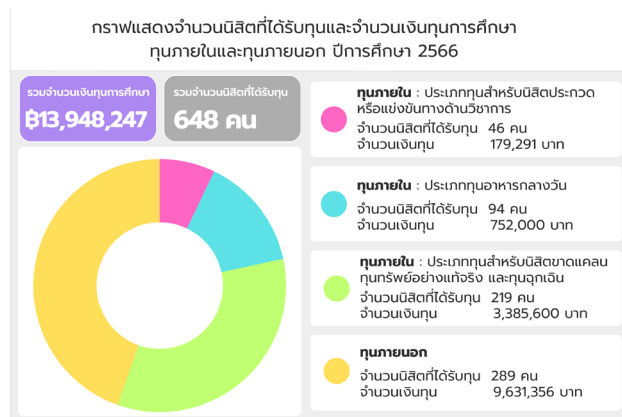
รวมทั้งหมด 340,432.41



► Student food insecurity and hunger

In 2023, SWU tasked the Student Affairs Office with providing grants to support 94 students facing food insecurity/hunger. The total grant amounted to 752,000 THB.

<http://studentaffairs.op.swu.ac.th/scholarship>



Policy

► Sustainable food purchases

SWU prioritizes purchase of products from local, sustainable sources following the government regulation.

SWU: <https://sdg.swu.ac.th/policies/14>

Outstanding Project

► Plant Production Technology Transfer Project through The AI Smart Farm Learning Center

Access to food security knowledge

SWU has a project to provide access to food security and sustainable agriculture knowledge/skills/technology to local farmers and food producers. In 2023, SWU has a project to develop innovative agricultural products and community food from raw materials in Nakhon Nayok Province.

<https://sdg.swu.ac.th/projects/90729/preview>



3 GOOD HEALTH AND WELL-BEING



Research



108 Publications

Numerical

Number of graduates



Total **6,289** Graduates



2022 In Academic year

Number of graduates in health professions



Total **700** Graduates



2022 In Academic year

► **Shared sports facilities**

SWU shares sports facilities with local communities and the general public in Bangkok campus with free access such as Football field, Running track, Skate park, and Multipurpose area. These facilities also support the Asok model project.

<https://sdg.swu.ac.th/news/30024>

► **Mental health support**

SWU has a Student Affairs Office to provide students and staff with access to mental health support with free access through OCCA application and SWU Smile room. Students and staff can access the SWU Smile room on Monday-Friday, 8:30 a.m.- 4:30 p.m. in various Service channels such as 1) Consultation room, Student Affairs Division 2) Online consultation room and 3) Telephone consultation service.

<https://studentaffairs.op.swu.ac.th/SWUSMILE>

Policy

► **Smoke-free policy**

SWU has had a 'smoke-free' policy since 2015.

<https://sdg.swu.ac.th/policies/9>

<https://www.facebook.com/phasaiclinic101/>



Outstanding Project

► The Royal Dental Project

The Royal Dental Project provides academic services in the field of dental public health and offers dental care to target populations in various areas, including Bangkok, provinces, and abroad (Laos). The target groups include the general public, children, the elderly, and disadvantaged groups such as prisoners and individuals in social welfare institutions. The goal of the project is to improve oral health and create social academic services that align with the university's mission and the national 20-year strategy for promoting public health in all aspects.

The results of the project are as follows:

1. Dental services provided

Children, youth, the elderly, the general public, and disadvantaged groups in the target areas have received dental services such as oral health checks, scaling, fillings, extractions, wisdom tooth surgery, and pediatric dentistry. In the fiscal year 2024, the Faculty of Dentistry conducted a total of 18 dental service sessions, serving a total of 10,770 individuals.

2. Development of integrated models

The project has developed an integrated model involving the Dental Hospital, the Faculty of Dentistry at Srinakharinwirot University, district health promotion hospitals, and provincial public health services.

This initiative aims to promote better oral health for all communities and contribute to the national goal of enhancing the overall health of the population.

<https://sdg.swu.ac.th/projects/90901/preview>



► The Tobacco Consumption Control Project: Thai Physicians Alliance Against Tobacco (Tpaat)

Current collaborations with health institutions SWU has the projects that have current collaborations with local and global health institutions to improve health & wellbeing outcomes such as the Tobacco Consumption Control Project.

<https://sdg.swu.ac.th/projects/90779/preview>



► People's Health Network Project Nakhon Nayok Province That Is Sustainable

Indicator 3.4.1 Mortality rate attributed to cardiovascular disease, cancer, diabetes or chronic respiratory disease

► Carers for the elderly and those with mobility problems, have knowledge and good health behavior in order to have good health 100%

► Diabetic and hypertension patients, symptoms were controlled better by more than 40% and 60% respectively.

► Elderly people and people with mobility problems are being rehabilitated. and Take care of your health 100% correctly.

► Homebound and bedridden patients decrease disability and burden on caregivers and communities Increase quality of life for patients.

<https://sdg.swu.ac.th/projects/90843/preview>



4 QUALITY EDUCATION



Research



24 Publications

Numerical

Number of graduates



Total **6,289** Graduates



2022 In Academic year

Number of graduates who gained a qualification that entitled them to teach at primary school level



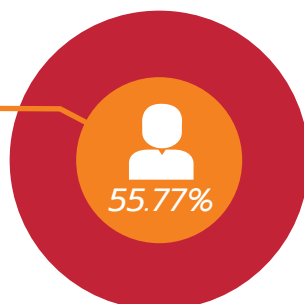
Total **432** Graduates



2022 In Academic year

Number of first-generation students starting from students starting a degree

Number of first-generation students starting a degree
4,722 Students



Number of students starting a degree
8,467 Students



► Public resources (lifelong learning)

SWU provides library and online courses for the general public. In 2023, SWU developed the SWU Lifelong Learning Platform to provide free access to educational resources.

<https://lifelong.swu.ac.th/academics>



Policy

► Lifelong learning access policy

SWU has a policy that ensures that access to these activities is accessible to all, regardless of ethnicity, religion, disability, immigration status or gender such as the Special Education And Care Pedagogical Training Program In Academic Year 2021 project. SWU also has a policy to provide re-skill/up-skill courses for all ages.

<https://sdg.swu.ac.th/policies/33>

Outstanding Project

► Vocational training events (lifelong learning)

SWU has tasked the Social Service Office to host events at university that are open to the general public: executive education programmes and vocational training. In 2023-2024, SWU has the Reinventing University project to teach the vocational students in Ayutthaya province about Social return on investment (SROI).

<https://sdg.swu.ac.th/projects/100902/preview>



5 GENDER EQUALITY



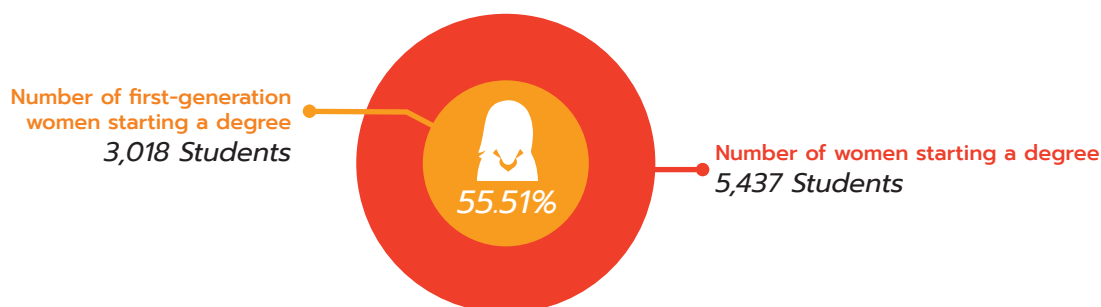
Research



4 Publications

Numerical

Number of first-generation women starting from women starting a degree



Number of senior academic staff



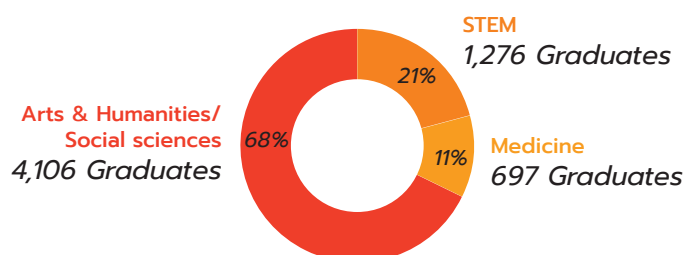
Total 60 Staff

Number of female senior academic staff



Total 24 Staff

Number of female graduates by subject area



Total Female Graduates 4,345 Graduates



► Tracking access measures

SWU has the Educational Support and Service Office to measure graduating compared to men's.

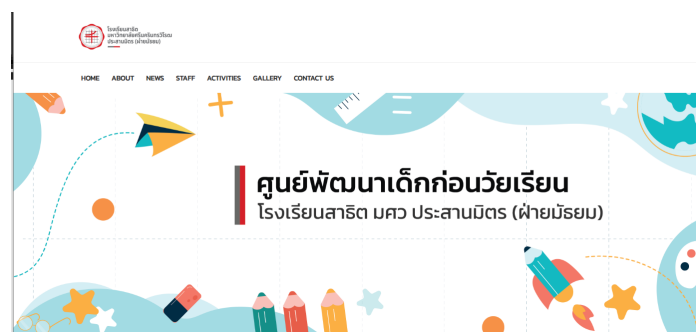
<http://edservices.op.swu.ac.th/data>

► Childcare facilities for staff and faculty

SWU has two nursery, childcare facilities for academic staff and staff, in Bangkok and Nakhon Nayok campus.

<https://www.facebook.com/people/ศูนย์พัฒนาเด็กก่อนวัยเรียน-โรงเรียนสาธิต-มศว-ประสานมิตร-ฝ่ายมัธยม/100070373286235/>

<https://www.spsm.ac.th/nursery/home/index.html>



Policy

► Policy for women applications and entry

SWU has a policy addressing women's applications and participation at the university but we are open for all applications.

<https://sdg.swu.ac.th/policies/10>

► Policy of non-discrimination against women

SWU supports gender equality. Our policy does not discriminate against women and transgender people. We have both male and female in senior positions. The percentage of male and female academic staff and staff is Equal.

<https://sdg.swu.ac.th/policies/24>

► Non-discrimination policies for transgender

SWU supports gender equality. Our policy does not discriminate against women and transgender people. We have both male and female in senior positions. The percentage of male and female academic staff and staff is Equal.

<https://sdg.swu.ac.th/policies/10>

► Maternity and paternity policies

SWU has a policy allowing women staff to take a maternity leave for 3 months with paid and another 3 months without paid. Moreover, the men's staff can also take care of his wife for 3 months with pay.

<https://sdg.swu.ac.th/policies/12>

► Policies protecting those reporting discrimination

SWU has the Regulations on Human Resource Management for protecting and reporting discrimination from educational or employment disadvantage.

<https://sdg.swu.ac.th/policies/31>

Outstanding Project

► The university has issued a regulation of Srinakharinwirot University regarding the dress code for regular undergraduate students (Version 2) B.E. 2564, which aims to encourage students to dress in accordance with their gender identity.

<http://pharmacy.swu.ac.th/wp-content/uploads/2022/08/ข้อบังคับมหาวิทยาลัยศรีนครินทรวิโรฒ-การแต่งกาย-ฉบับที่-2-พ.ศ.2565.pdf>

6 CLEAN WATER AND SANITATION



Research



10 Publications

Numerical

Volume of water used in the university: Inbound (treated/extracted water)



Total 804,882 m³

► **Wastewater treatment**

SWU has The Sustainable Development Office to treat wastewater on campus.

<https://green.swu.ac.th/water>

<https://green.swu.ac.th/waste>

Policy

► **Water reuse policy**

SWU has a policy to maximize water reuse across the university. Water supply at SWU (Ongkharak Campus) is abundant. There are a number of large lakes and interconnecting waterways throughout the campus. The several large lakes and interconnecting waterways throughout the campus serve as both repositories for conserving water runoff and also as a source from which the vast swathes of vegetation across campus can be watered.

<https://green.swu.ac.th/water>



Outstanding Project

► *Development of a Membrane Bioreactor for Water Reuse in Community and Agricultural Activities*

SWU supports water conservation off campus such as the Waste Water Treatment project.

<https://sdg.swu.ac.th/projects/100904/preview>



7 AFFORDABLE AND CLEAN ENERGY



Research



28 Publications

Numerical

Total energy used



Total **36,022** GJ

University floor space



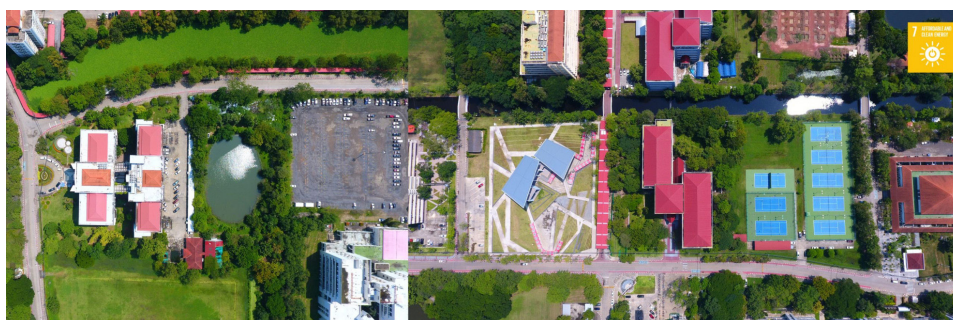
Total **1,041,413** m²

Policy

► Divestment policy

SWU has the Sustainable Development Office to organize policy on divesting investments from carbon-intensive energy industries.

<https://sdg.swu.ac.th/policies/18>



► Policy development for clean energy technology

SWU has an EV charging station at Ongkharak Campus and E-Motorbike Sharing Platform to support the government in clean energy and energy-efficient technology policy development.

<https://green.swu.ac.th/transportation>



8 DECENT WORK AND ECONOMIC GROWTH



Research



19 Publications

Numerical

Number of employees



Total **5,592** Employees

Proportion of employees on secure contracts



Total **5,186** Employees

► **Employment practice unions**

SWU has the faculty and staff council of Srinakharinwirot University to recognise unions & labor rights (freedom of association & collective bargaining) for all.

<http://senate.swu.ac.th/Default.aspx?tabid=19296>

► **Employment practice appeal process**

SWU has a process for employees to appeal on employee rights and/or pay.

<http://legal.op.swu.ac.th/appeal>

Policy

► **Employment policy on discrimination**

SWU has a policy to support non discrimination in the workplace. University ethics regulations are announced as the rule of working ethics and good employment practices.

<https://sdg.swu.ac.th/policies/25>

► **Employment policy pay scale equity**

SWU has a policy on pay scale equity including a commitment to measurement and elimination of gender pay gaps.

<https://sdg.swu.ac.th/policies/30>



Outstanding Project

► Aomsin Bank Project 2022

The Aomsin Bank Project 2022 is an initiative where students from Srinakharinwirot University applied their knowledge to develop products and services for the Banglamphu community, as well as enhance the potential of local entrepreneurs. The project includes group management, product and service development, marketing and sales promotion, and production control to improve efficiency. This is achieved through the preparation of income and expenditure accounts for businesses and household accounts.

<https://sdg.swu.ac.th/projects/90757/preview>



9 INDUSTRY, INNOVATION AND INFRASTRUCTURE



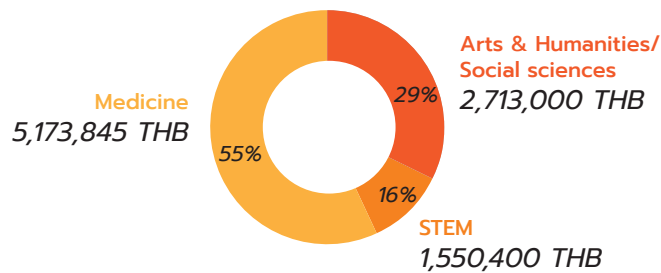
Research



14 Publications

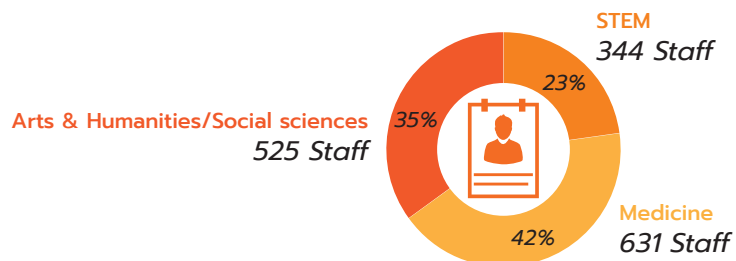
Numerical

Research income from industry and commerce



Total Research income
9,437,245 THB

Number of academic staff by subject area



Total academic staff
1,500 Staff



Outstanding Project

► *Sustaining Thailand's Seafood Processing Sector: Workforce Development*

This study explores talent utilization in Thailand's seafood processing industry, focusing on its transition to Industry 4.0 and addressing skills mismatches. The research is divided into two phases with two publications.

Phase 1: Workforce Development The study investigates the characteristics of talent and how to effectively utilize it in the seafood processing sector. It uses a qualitative, multiple-case study approach, gathering data from 26 key informants including industry executives, HR managers, and employees.

Phase 2: Causal Model of Talent Utilization, Engagement, and Performance This phase develops a causal model linking talent utilization, engagement, and performance among 360 employees in Southern Thailand's seafood processing industry. Data was collected using Likert questionnaires, and structural equation modeling (SEM) was applied. The model showed strong statistical fit, indicating that the characteristics of talent and talent utilization directly influenced both employee engagement and performance.

In summary, the research offers a framework for improving performance in the seafood processing industry by focusing on talent management, engagement, and development.

<https://sdg.swu.ac.th/projects/90764/preview>



10 REDUCED INEQUALITIES



Research



6 Publications

Numerical

Number of students



Total **29,327** Student

Number of students with disability



Total **22** Student

Number of employees



Total **5,592** Staff

Number of employees with disability



Total **37** Staff

► Access to university track underrepresented groups applications

SWU has an Educational Support and Service Office to measure/track applications & admissions of disabled students.

<http://studentaffairs.op.swu.ac.th/dsscenter>

► Disability support services

SWU has a Physical Development Office that provides accessible facilities for people with disabilities, such as parking lots, ramps, handrails, restrooms, Braille characters at the elevator, and accessible pathways.

<https://sdg.swu.ac.th/news/30026>

Policy

► Disability accommodation policy

SWU has an Educational Support and Service Office to provide funding / scholarship for student disability.

<https://sdg.swu.ac.th/policies/35>



Outstanding Project

► *Academic service projects to reduce inequality and enhance the quality of education.*

The university has implemented academic service projects aimed at reducing inequality and enhancing the quality of education, such as the "Diy Your Happiness" activity, which is a self-designed happiness guide, and activities for the professional development of teachers and education staff to improve classroom management and effective learning facilitation. Additionally, the university has organized initiatives to raise the quality of education for career development and employment opportunities in remote schools.

<https://sdg.swu.ac.th/sdg/2023/SDG%2010>



11 SUSTAINABLE CITIES AND COMMUNITIES



Research



9 Publications

Numerical

University expenditure



Total 9,727.0703 Million THB

University expenditure on arts and heritage



Total 9,679,800 THB

► **Public access to buildings**

SWU has The Institute of Culture and Arts to provide public access to buildings and monuments of cultural significance such as the Museum of Education.

<https://sport.swu.ac.th/th/service>

► **Public access to libraries**

SWU has The Central Library of Srinakharinwirot University to provide public access to libraries including books and publications.

<https://lib.swu.ac.th/>

► **Public access to museums**

Institute of Culture and Arts, there is an area for art and cultural learning services including the history of the university in 2 areas which are 1) Education Museum and SWU Archives and 2) G23 Art Gallery, which provides services to faculty, students and the public without charging. In addition, the Institute of Culture and Arts, Srinakharinwirot University also organizes staff to provide guided tours, relay historical information and show artwork.

<https://ica.swu.ac.th/service/act>



► Sustainable practices targets

SWU has the Sustainable Development Office to measure and set targets for more sustainable commuting shuttle bus, public transportation and vehicles.

<https://green.swu.ac.th/transportation>

► Promote sustainable commuting

SWU has the Sustainable Development Office to promote the % of more sustainable commuting shuttle bus, public transportation.

<https://green.swu.ac.th/transportation>

► Allow remote working

SWU has The Computer Center to promote and allow telecommuting or remote working for employees. SWU provide software (eg. meet, zoom) for online learning, meeting and conference.

<http://en.cc.swu.ac.th/Default.aspx?tabid=19234>

<https://covid19.swu.ac.th/>

Outstanding Project

► Creative Economy Entrepreneur Incubation Project, Year 3 (Academic Service Activity on Clothing Design and Development for the Tai Ngam Weaving Group, Khao Chakan District, Sa Kaeo Province)

The project aims to create prototype clothing products for the Tai Ngam Weaving Group in Khao Chakan District, Sa Kaeo Province.

<https://sdg.swu.ac.th/projects/100920/preview>



12 RESPONSIBLE CONSUMPTION AND PRODUCTION



Research



18 Publications

Numerical

Amount of waste generated



Total **1,896** mt

Amount of waste recycled



Total **5** mt

► **Waste tracking**

SWU has the Sustainable Development Office to measure the amount of waste generated and recycled across the university.

http://physdo.op.swu.ac.th/waste_psm

► **Publication of a sustainability report**

SWU has the Sustainable Development Office to make Publication of sustainability reports.

<https://green.swu.ac.th/resources>

Policy

► **Ethical sourcing policy**

SWU has the Property Management Division to make the policy on ethical sourcing of food and supplies.

<https://sdg.swu.ac.th/policies/13>

► **Policy waste disposal - hazardous materials**

SWU has the Sustainable Development Office to make a policy around use minimisation - Of plastic.

<https://sdg.swu.ac.th/policies/16>



Research



10 Publications

Numerical

Total energy used



Total **36,022** Gj

► **Local education programmes on climate (13.3.1)**

SWU has a Faculty of Environmental Culture and Ecotourism to provide local education programmes or campaigns on climate change risks, impacts, mitigation, adaptation, impact reduction and early warning.

<https://sdg.swu.ac.th/projects/80709/preview>

Policy

► **Commitment to carbon neutral university**

SWU has the target to be carbon neutral in 2040. (scope 1)

<https://sdg.swu.ac.th/policies/38>

Outstanding Project

► **An Application of Geographic Information System for Participatory Analysis of Wildfire Risk Area in Chiang Rai Province**

<https://sdg.swu.ac.th/projects/90840/preview>





Research



5 Publications

Policy

► Reducing marine pollution

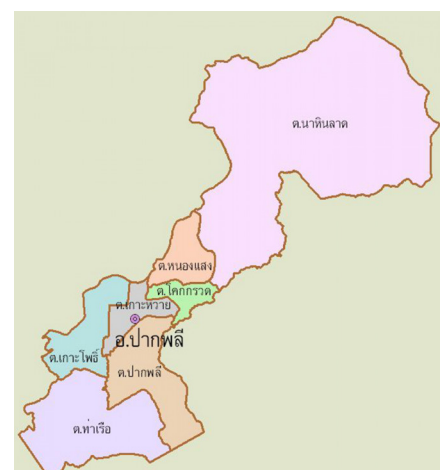
SWU has the Sustainable Development Office to prevent and reduce marine pollution from plastic waste.
<https://sport.swu.ac.th/th/service>

Outstanding Project

► Bike for Life Thai Phuan Project

The project "Community Economic Development and Promotion of Integrated Tourism Based on Thai Phuan Lifestyle (Bike for Life Thai Phuan)" aims to contribute to community development and academic services for society in the economic, social, cultural, and environmental dimensions. It aligns with regional and provincial development goals by promoting cycling for exercise or cycling for tourism to explore and learn about the community of Nong Saeng subdistrict, Pak Phli district, Nakhon Nayok province, which is rich in the culture of the native Thai Phuan people, including their traditions, temples, art, performances, and ancient wisdom that is over 100 years old.

<https://sport.swu.ac.th/th/service>





Research



4 Publications

Policy

► *Sustainable use, conservation and restoration of land (policy)*

SWU has the Sustainable Development Office to make a policy to ensure the conservation, restoration and sustainable use of terrestrial ecosystems associated with the university.

<https://green.swu.ac.th/infrastructure>

Outstanding Project

► *Botanical Garden of The Faculty of Pharmacy, Srinakharinwirot University*

<https://sdg.swu.ac.th/projects/90813/preview>



16

PEACE, JUSTICE AND STRONG INSTITUTIONS



Research



5 Publications

Numerical

Number of graduates



Total **6,289** Graduates

Number of graduates from law and enforcement related courses



Total **88** Graduates

► **Elected representation**

SWU has elected representation on the university's highest governing body from. We have a student senate and faculty council.

<http://studentaffairs.op.swu.ac.th/studentorganization>

► **Students' union**

SWU has a student senate and student council.

<http://studentaffairs.op.swu.ac.th/studentorganization>

<https://th-th.facebook.com/spanisitswu>

► **University principles on corruption and bribery**

SWU has the Office of Legal Affairs and Discipline to publish the university's principles and commitments on organized crime, corruption & bribery to all departments.

<http://legal.op.swu.ac.th/>



► Academic freedom policy

SWU supports academic freedom (the freedom to choose areas of research and to speak and teach publicly about the area of their research).

<https://academic.swu.ac.th/>

► Policy- and lawmakers outreach and education

SWU is a member of Sustainable University Network of Thailand to fight climate change.

<https://sunthailand.net/network>

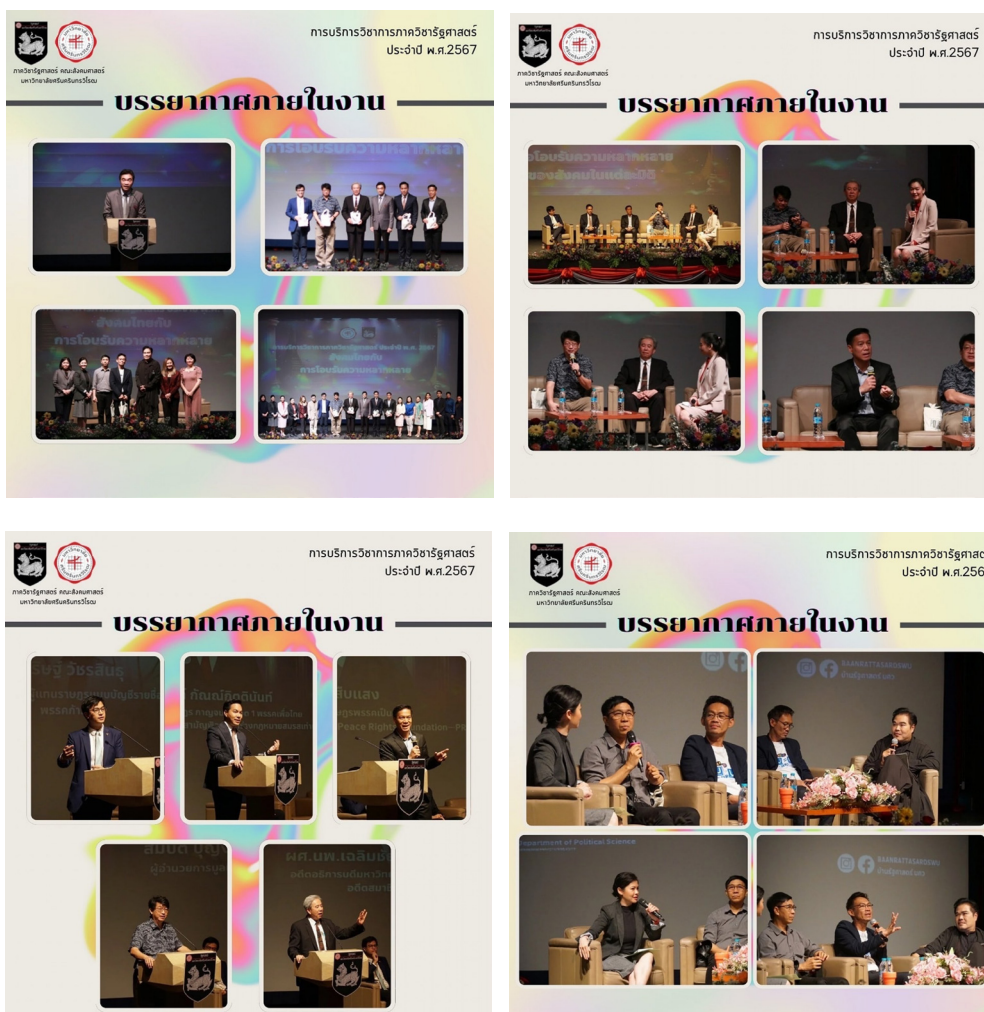
Outstanding Project

► Political Science Academic Service Project 2024 Under the theme “Thai Society and Embracing Diversity”

When society is diverse, are we ready to accept and embrace everyone as equals, recognizing their inherent value?

The Department of Political Science, Faculty of Social Sciences, Srinakharinwirot University, invites faculty members, students, and interested individuals to join the Political Science Academic Service Project for the year 2024.

<https://sdg.swu.ac.th/projects/100915/preview>





Outstanding Project

► *Education for SDGs specific courses on sustainability*

SWU has the International College for Sustainability Studies that has many courses addressing sustainability and the SDGs such as Bachelor of Arts in Sustainable Hospitality and Tourism Management, Bachelor of Science in Environmental Technology and Resources, and Bachelor of Arts in Integrated Tourism Management.

<https://ic.swu.ac.th/academic/ba-in-sustainable-tourism/>

► *Relationships with regional NGOs and government for SDG policy*

SWU has direct involvement in, or input into, national government SDG policy development - including identifying problems and challenges, developing policies and strategies, modeling likely futures with and without interventions, monitoring and reporting on interventions, and enabling adaptive management such as the Tobacco Consumption Control Project.

<https://sdg.swu.ac.th/projects/90779/preview>

